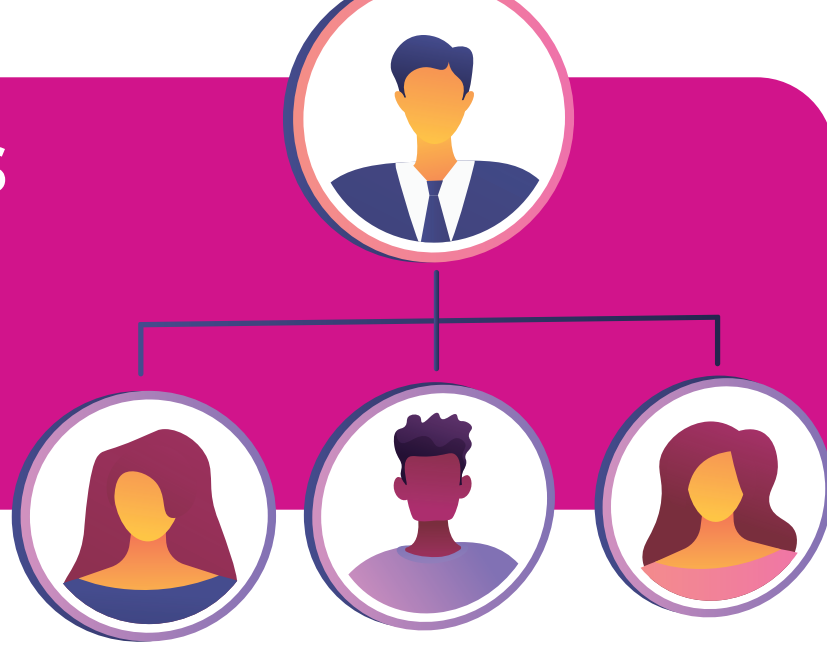


# ISM SUSTAINABILITY RESEARCH

The Institute for Supply Management® conducted research between Feb. 12 – June 4, 2021. This survey included over 550 respondents and focused on sustainability, the role of supply management in sustainability, and sustainability programs through suppliers.

## KEY THEME 1:

### SUSTAINABILITY IS DRIVEN FROM THE TOP IN ORGANIZATIONS



Highest-Ranking Stakeholder of Company Sustainability Goals

63%

Board of Directors or CEO

Sustainability Strategy is Led by

40%

C-Level Executive

30%

Supply Management

## KEY THEME 2:

### THE EXECUTION OF SUSTAINABILITY INITIATIVES IS PREDOMINANTLY DONE BY SUPPLY MANAGEMENT

Supply Chain and Executive Team are Leading the Charge

44%

Supply Management

28%

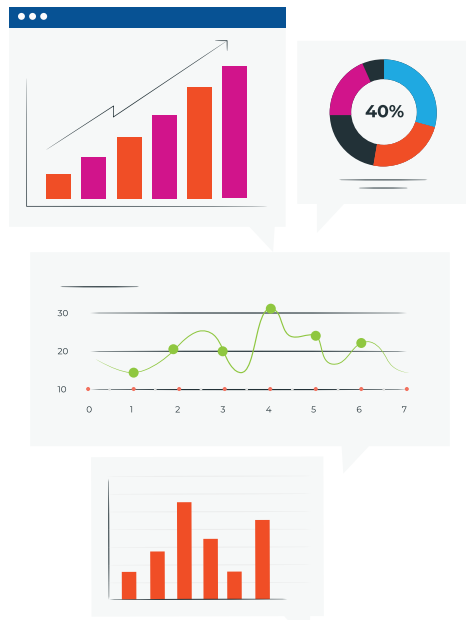
C-Level Executive

32%

Corporate Responsibility

## KEY THEME 3:

### TOOLS AND METRICS ARE IN THEIR INFANCY



56%

Only use Excel to implement and manage sustainability strategies

63%

Only use Excel to measure effectiveness of sustainability initiatives

### COMPANY PERFORMANCE GOALS TIES TO SUSTAINABILITY



39%

Sustainability is included in company performance goals

13%

Sustainability only included in performance goals of person(s) with responsibility for sustainability

10%

Sustainability only included in performance goals of department(s) with responsibility for sustainability

7%



Sustainability only included in supply management performance goals

### SUPPLY MANAGEMENT SUSTAINABILITY GOALS & PROGRAMS

37%

Have long & short-term sustainability goals specifically for supply management

42%

Have active & well-established sustainability programs for supply management

### SUSTAINABILITY THROUGH SUPPLIERS

60%

Do not require sustainability goals of critical Tier-1 suppliers

58%

Do not have sustainability programs for critical Tier-1 suppliers

## What's Next?

For more resources and to download the ISM sustainability research white paper.

[ismworld.org/sustainability](https://ismworld.org/sustainability)

