



## ISM 2022 SUSTAINABILITY RESEARCH

The Institute for Supply Management® conducted research between December 15, 2021, and January 30, 2022. This survey included over 435 respondents and focused on sustainability, the role of supply management in sustainability and sustainability programs through suppliers.

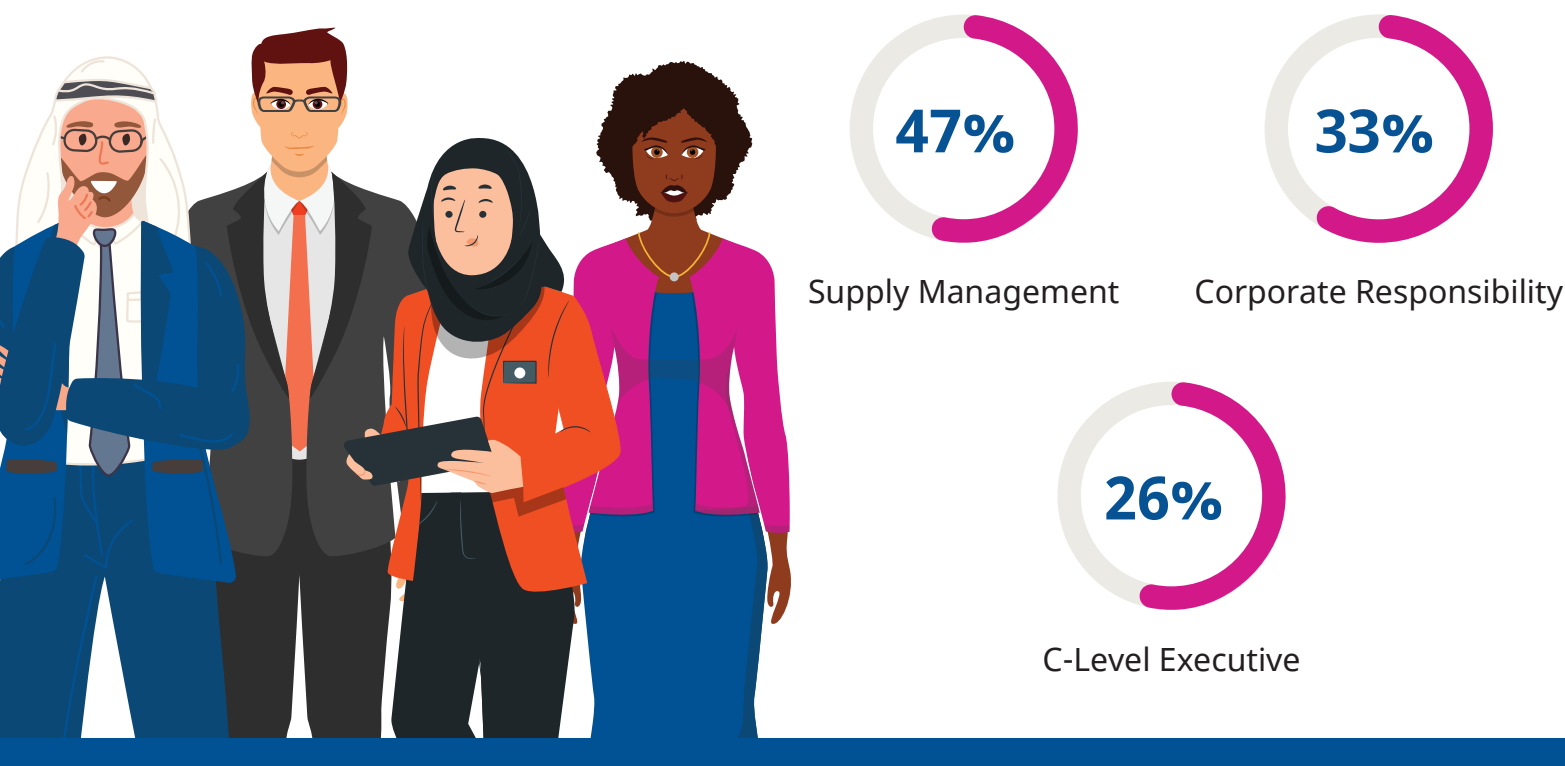
### SUSTAINABILITY TOUCHES THE TOP OF ORGANIZATIONS



### THOUGHT LEADERSHIP FOR SUSTAINABILITY IS LED BY:



### EXECUTION OF SUSTAINABILITY INITIATIVES DONE SO BY:



### COMPANY PERFORMANCE GOALS TIED TO SUSTAINABILITY

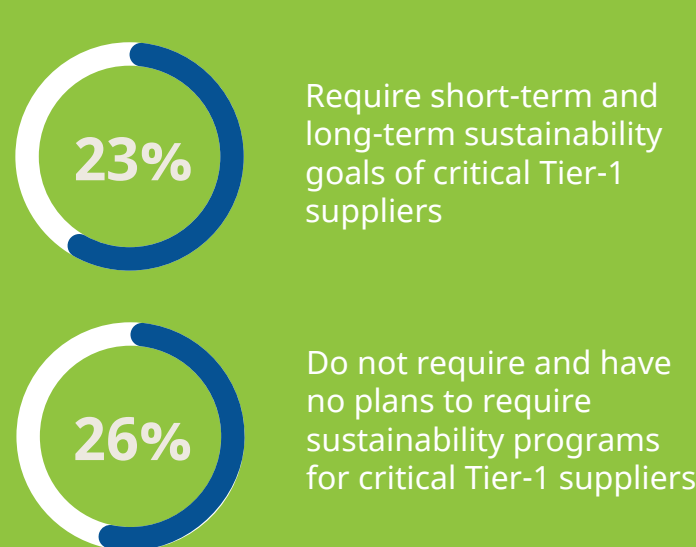


25% report that sustainability is not included in anyone's performance goals.

#### SUPPLY MANAGEMENT SUSTAINABILITY GOALS & PROGRAMS



#### SUSTAINABILITY THROUGH SUPPLIERS



### What's Next?

For more resources and to download the ISM sustainability research white paper.

[ismworld.org/sustainability](https://ismworld.org/sustainability)