



## ISM 2025 DATA & ANALYTICS RESEARCH

Institute for Supply Management® conducted a data and analytics survey between May 27 through July 21, 2025. The survey included over 196 respondents and focused on various impacts of data and analytics within the profession.

### KEY HIGHLIGHTS



65%

of organizations have a dedicated data governance function.



86%

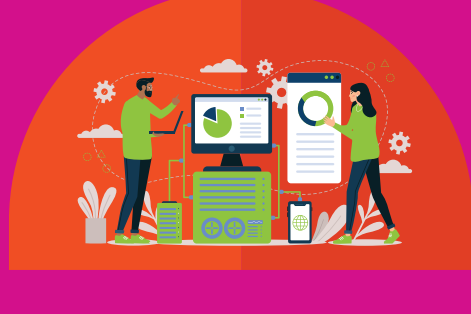
agree or strongly agree that data governance is a necessity.



#1

element of respondents' AI governance infrastructure is security and privacy.

### DATA GOVERNANCE



of companies have a dedicated data governance function.

65%



of data governance functions are house in a Center of Excellence.

64%



find the data governance program to be useful.

72%

### ARTIFICIAL INTELLIGENCE (AI)

22%



of respondents have a governance infrastructure in place to guide and oversee AI adoption and implementation.

56%



are studying, planning or have AI tools in place around invoice-to-pay processes.

71%



agree or strongly agree that AI will help them be better at their job.

### DATA QUALITY

51%

report the quality of their data is good or excellent.

72%

say the quality of their data is better or significantly better than the past two years.

33%

rank their data security ability as very high to assure data quality.

### TOP 3 VERY HIGH IMPACTS

THESE ARE THE TOP THREE VERY HIGH IMPACTS REPORTED, RELATING TO THE QUALITY OF SUPPLY CHAIN DATA:

LACK OF STANDARDS ACROSS ORGANIZATIONS

1

TRAINING/SKILLS OF PERSONNEL

3

DISCONNECTED SYSTEMS

2

For more resources around ISM's data and analytics research, visit

[ismworld.org/data-analytics](https://ismworld.org/data-analytics)

